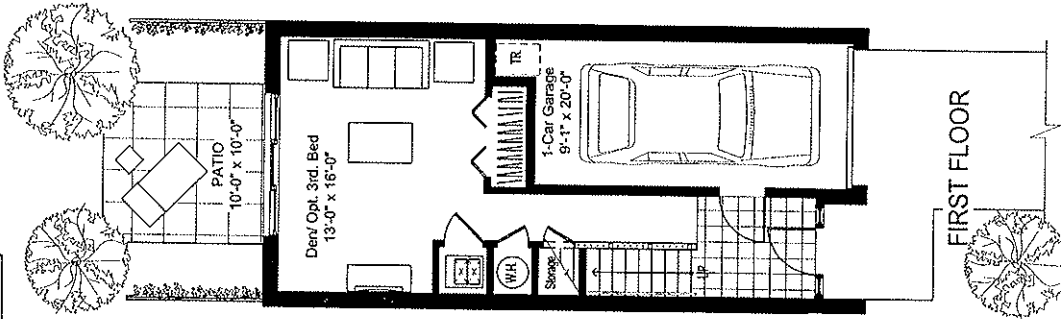
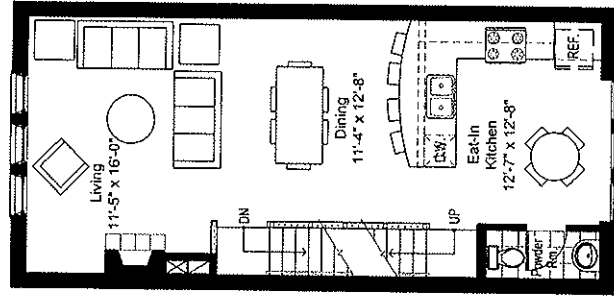




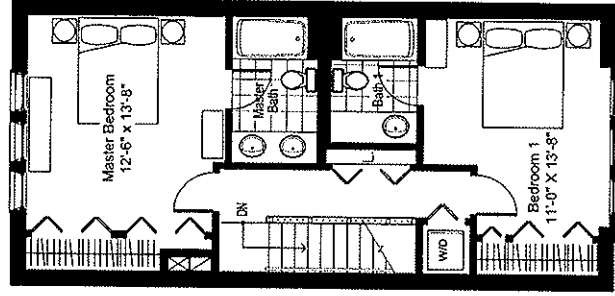
Townhome Unit A - Left
 2 Bedrooms, 2 1/2 Bathrooms, Den
1,708 Sq. Ft.



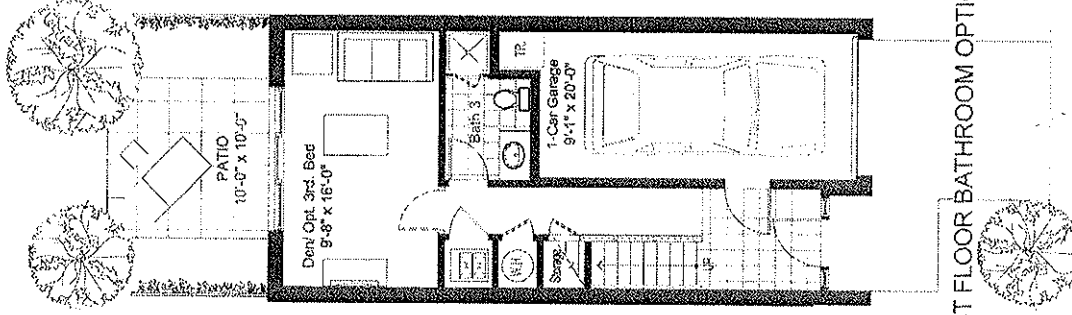
FIRST FLOOR



SECOND FLOOR



THIRD FLOOR



FIRST FLOOR BATHROOM OPTION

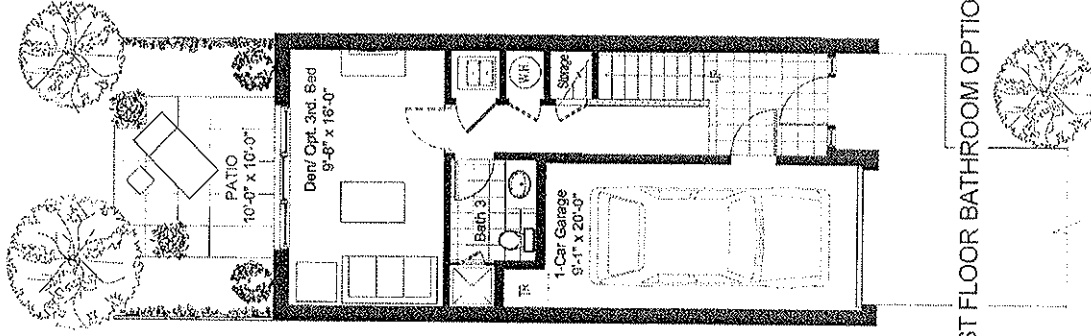
Forest Park Grove LLC is a joint venture of:
FOCUS DEVELOPMENT
 and
THE TAXMAN CORPORATION

Focus Development's policy of continuous improvement is a design and construction process that all specifications, equipment, dimensions and prices are subject to change without notice.

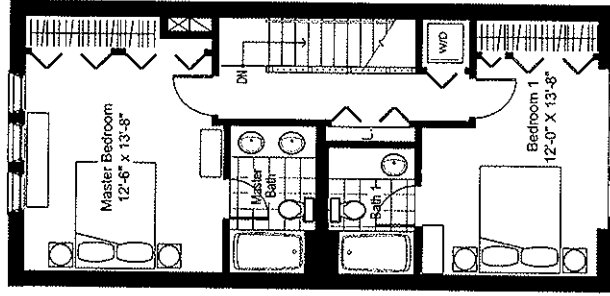
(708) 366-7665
 www.focusdevelopment.com

FD2508

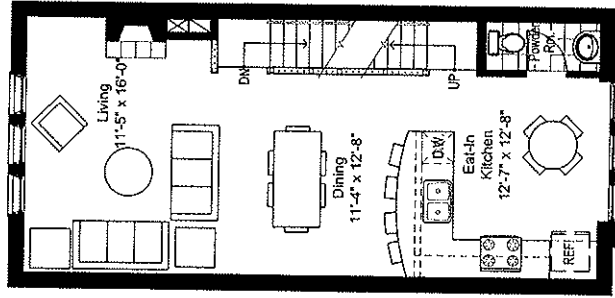
Townhome Unit A - Right
2 Bedrooms, 2 1/2 Bathrooms, Den
1,708 Sq. Ft.



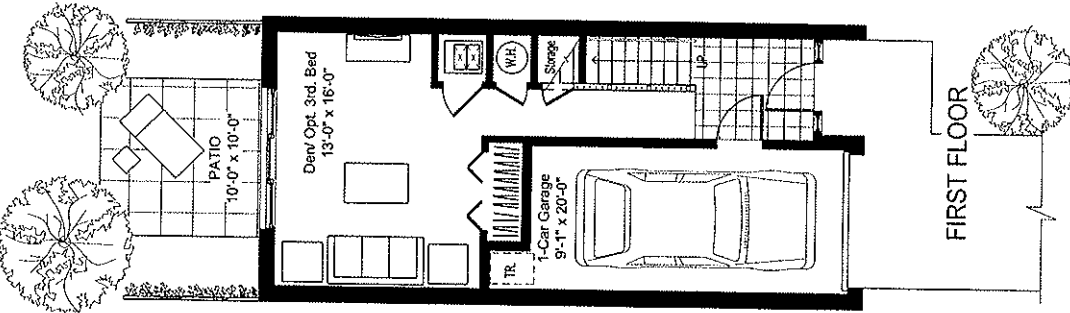
FIRST FLOOR BATHROOM OPTION



THIRD FLOOR

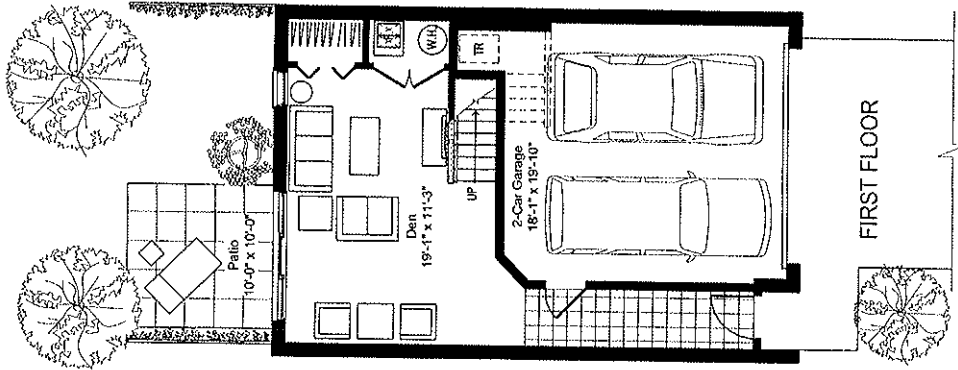


SECOND FLOOR

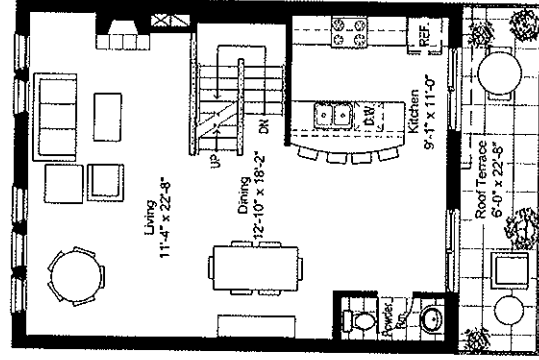


FIRST FLOOR

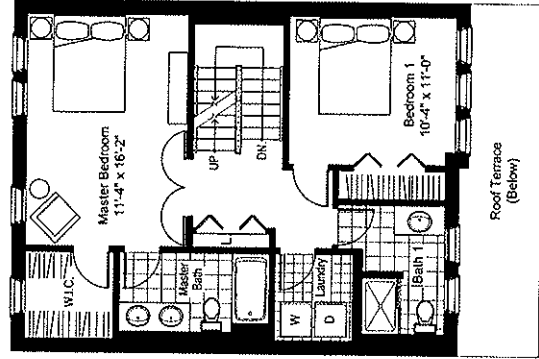
Townhome Unit B - Left
2 Bedrooms, 2 1/2 Bathrooms, Den
1,904 Sq. Ft.



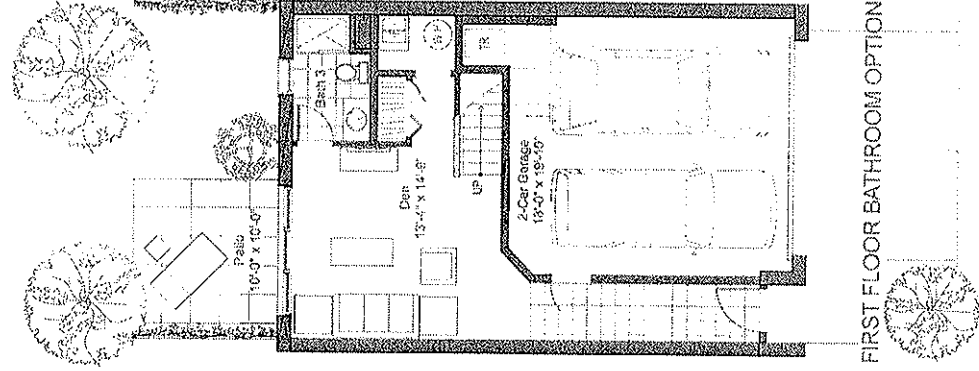
FIRST FLOOR



SECOND FLOOR



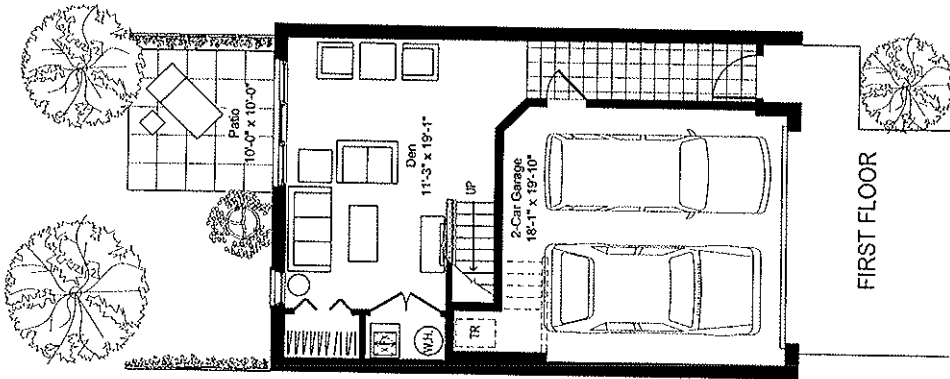
THIRD FLOOR



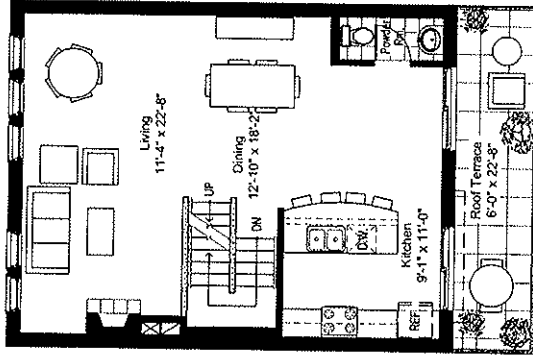
FIRST FLOOR BATHROOM OPTION



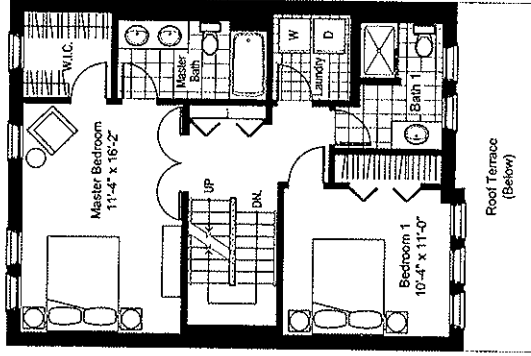
Townhome Unit B - Right
 2 Bedrooms, 2 1/2 Bathrooms, Den
1,904 Sq. Ft.



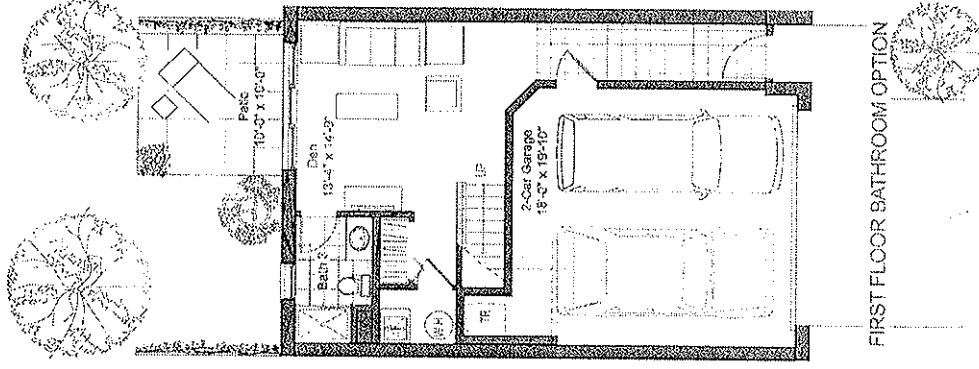
FIRST FLOOR



SECOND FLOOR



THIRD FLOOR



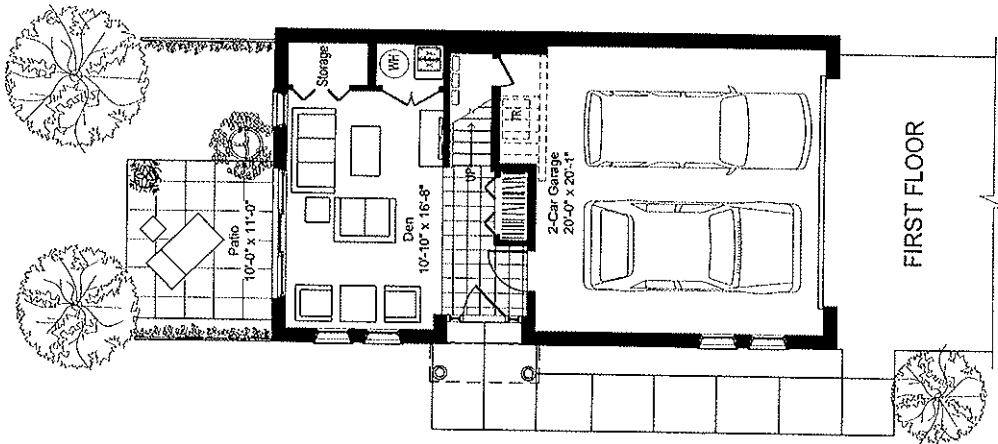
FIRST FLOOR BATHROOM OPTION

Forest Park Grove LLC is a joint venture of:
FOCUS DEVELOPMENT
 and
THE TAXMAN CORPORATION

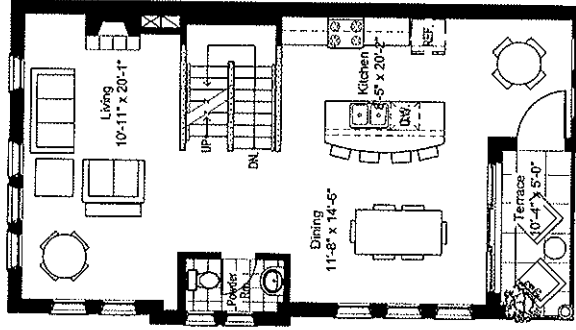
From: Developers' Plan of continuous improvements to design and construction required to all specifications, equipment, materials and finishes are subject to change without notice. 02-28-09

(708) 366-7665
www.livacdevelopment.com

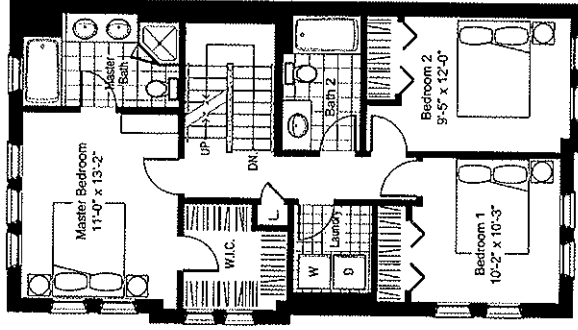
Townhome Unit C - Left
3 Bedrooms, 2 1/2 Bathrooms, Den
1,962 Sq. Ft.



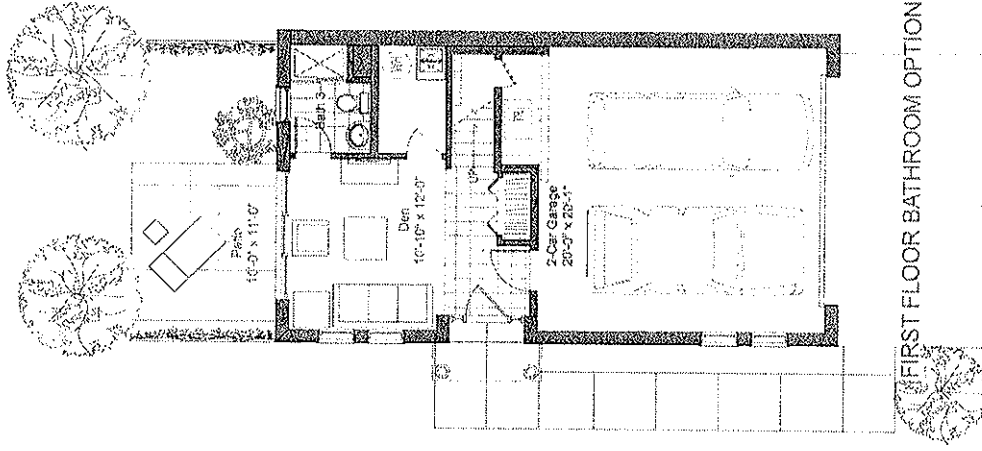
FIRST FLOOR



SECOND FLOOR



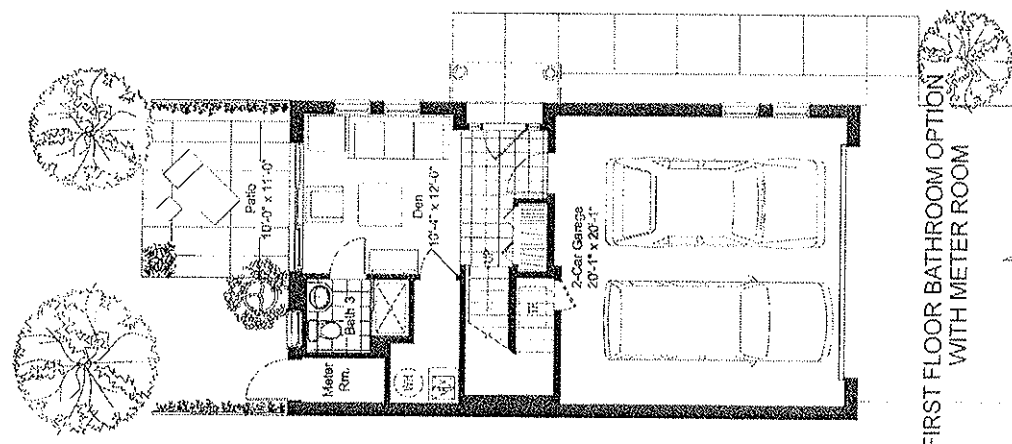
THIRD FLOOR



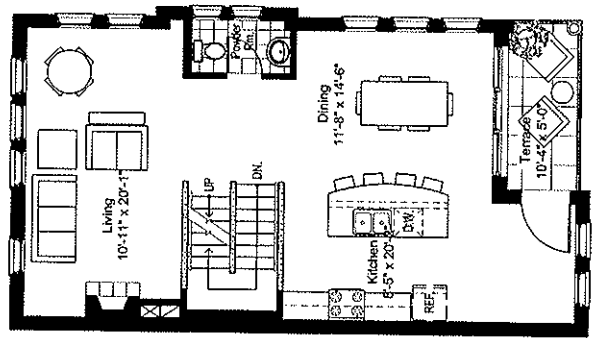
FIRST FLOOR BATHROOM OPTION

**THE RESIDENCES AT
THE GROVE**

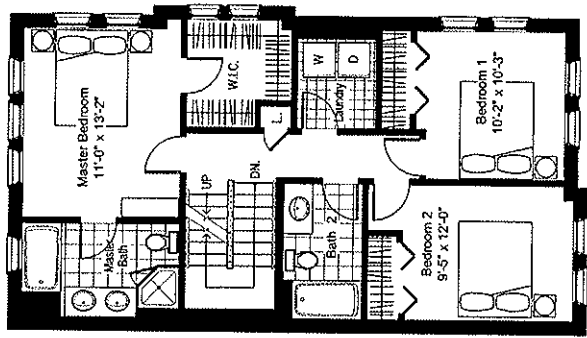
Townhome Unit C - Right
3 Bedrooms, 2 1/2 Bathrooms, Den
1,962 Sq. Ft.



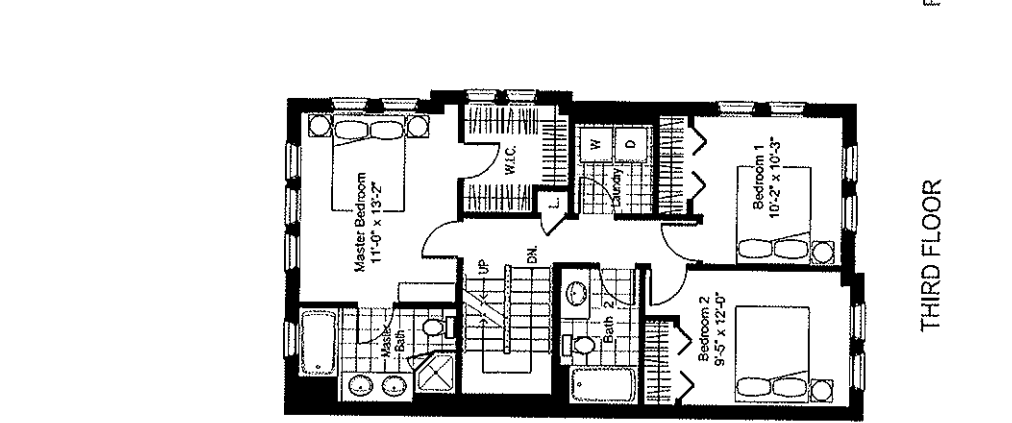
FIRST FLOOR



SECOND FLOOR



THIRD FLOOR



FIRST FLOOR BATHROOM OPTION B
WITH METER ROOM

Forest Park Grove, LLC is a joint venture of
FOCUS and **THE TAXMAN**
DEVELOPMENT CORPORATION

(708) 366-7665
www.focusdevelopment.com

Focus Development's policy of continuous improvement in design and construction requires that all specifications, equipment, dimensions and prices are subject to change without notice. 05-05-06